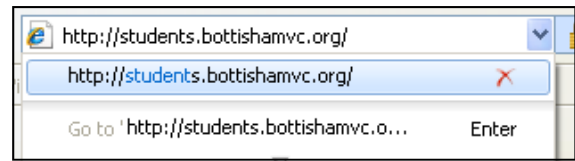


# Student Remote Access to Bottisham Village College Intranet

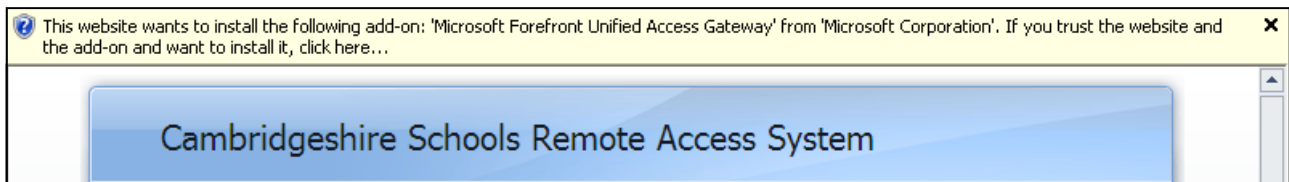
Authored by R. Mayer. Version 1.1 (08/07/10)

- 1 In your favourite browser, visit the website **http://students.bottishamvc.org**

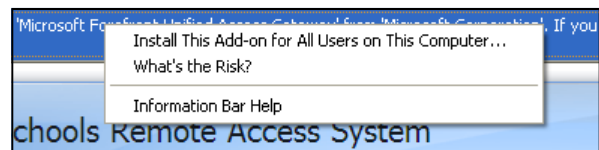


On the first visit from a computer, some of the following steps may need to be taken. If you do not experience some of the prompts, just skip that step.

- 2 **Right click** on the bar that appears at the top of your browser.



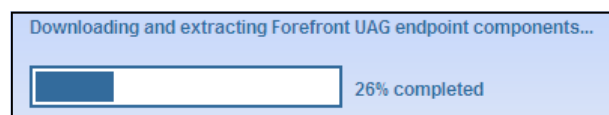
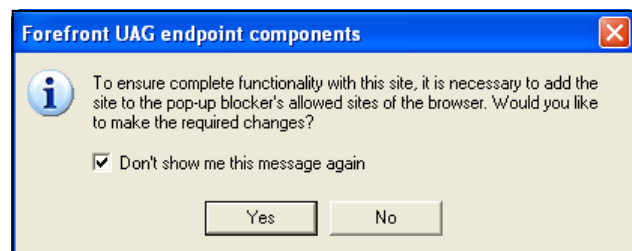
- 3 **Select the first option**, "Install This Add-on for All Users of This Computer..."



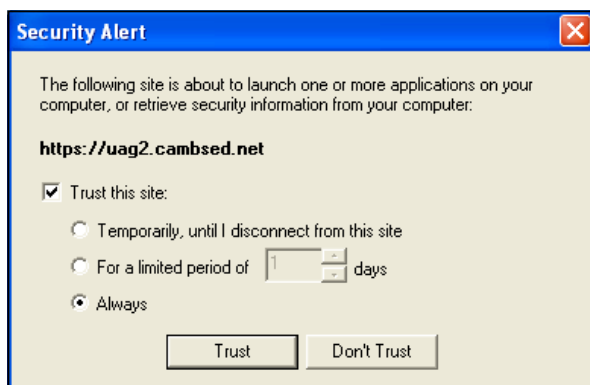
- 4 Once prompted, Click on "Install"



- 5 Check the box and click on "OK"



- 6 Check the box “Trust this site” and select “Always”, then click “Trust”



If, at this point you are sent the message below, it could be for one or more of the following reasons. If you do not see the message below, you may safely ignore this box.

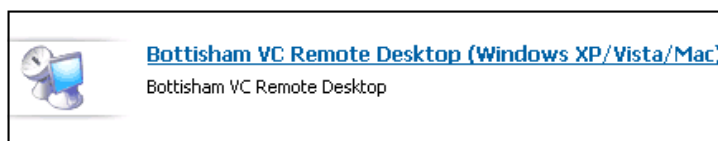
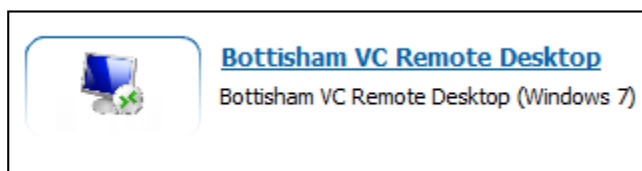
**The endpoint does not meet access policy requirements for this site.**

Your computer does not meet the security policy requirements of this site. For more information, contact your administrator.

- The machine you are using does not have any anti-virus protection in place, which is a requirement to use this facility. If this is the case, the school recommends the product AVG, which can be downloaded for free from <http://free.avg.com>.
- ActiveX Controls have been disallowed by your browser.
- Java is not installed on your computer.

- 7 You may now log in using the credentials you normally use to access the school network. Do not forget to select “Bottisham VC” in the bottom box.

- 8 Click on one of the options to the right that are now presented to you. Which one is active will depend on which Operating System you are running.



- 9 You may now log in to Windows, once again using your normal school network credentials.