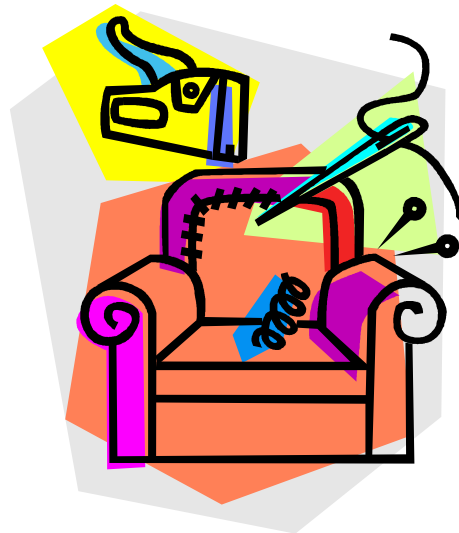


Bottisham Village College

Adult and Community Learning

Upholstery

**You will work on your own item of furniture
at your own pace, and learn modern and
traditional upholstery techniques**



Friday, 09.30 - 11.30

Friday, 11.45 - 13.45

Commencing 20th January 2012

£90 for a 10 week term

Tutor: Ros Jeavons

This course is suitable for beginners as well as those with more experience.

Modern and traditional upholstery techniques are taught. Students work on their own items of furniture at their own pace, with demonstration of techniques by the tutor. Students are advised to begin with a simple item such as a drop-in (loose) seat (bring whole chair), progressing to more complicated pieces.

Depending on their project, students will acquire a sound knowledge of the basic techniques, including webbing, loose stuffing, springing, stitched edges, application of fabrics and trimming, etc.

You will need to bring your own item of furniture to work on. Please remember you will need to carry it from your car each lesson. Basic upholstery materials can be bought from tutor. A camera, notepad and pen are useful for recording progress.

You will be able to borrow the tutor's tools to begin with. She will then be able to advise you on the purchase of your own.

How to enrol on this course:

Enrolment forms can be downloaded from our website: www.bottishamvc.org/commed and returned to the Community Office with your course fee. Alternatively, please ring or email the Community Office. A place will be reserved for you once your completed enrolment form and payment have been received. Cheques should be made payable to **Bottisham Village College**. Credit and Debit card details can be given on the enrolment form. Concessionary fees are available if you are in receipt of a Means Tested Benefit (JSA and ESA only).

Unless you are informed that the course is full or cancelled, you should attend the first session.

Refunds will only be given if the course is cancelled or if you withdraw due to ill health; in this case evidence is required. If a class is cancelled due to circumstances beyond our control, extra classes will be added at the end of the course. Please note that the office will not be manned during the school holidays.

**Community Education,
Bottisham Village College,
Lode Road, Bottisham, Cambridge CB25 9DL
Tel: 01223 811372
Email: commed@bottishamvc.org**